

KRMCA NEWSLETTER

JANUARY 2017

IN THIS ISSUE:

KYTC 2016 REVIEW

page 3

KRMCA LEVEL III Explained

page 8

KRMCA Classroom Upgraded

Page 12



**KENTUCKY
READY MIXED CONCRETE
ASSOCIATION**

***NEW YEAR.
NEW LOOK.
(again)***

COMING UP:

**JAN 11
ACI LEVEL I**

**JAN 26-28
WINTER CONVENTION**

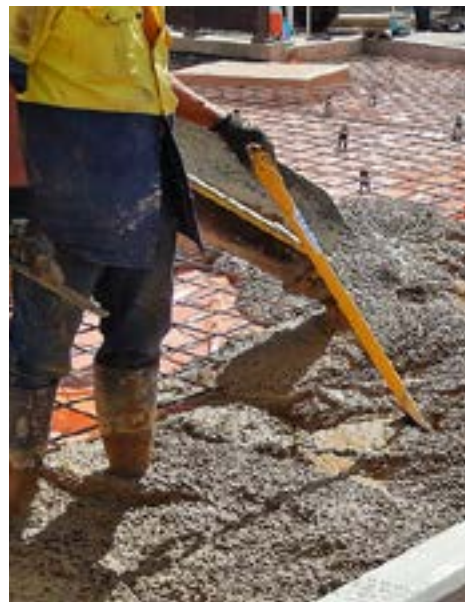
**FEB 6
ACI LEVEL I**

**FEB 7-10
KRMCA LEVEL II**

**MAR 6-9
KRMCA LEVEL III**

UPCOMING EVENTS

CALENDAR



3 January 3rd - 6th. KRMCA OFFICE - CLASSROOM. KRMCA LEVEL II CERTIFICATION CLASS. This class is held 3 times during the year . This certification is a requirement for any specified work for KYTC and can only be obtained at the KRMCA office.



11 January 11th. KRMCA OFFICE - CLASSROOM. ACI LEVEL I Certification class . This class is held monthly and covers the material review, written test, and practical test for the ACI Level I Concrete Technician Certification. Level I Registration Forms can be found on page 14 of the newsletter



26 January 26th - 28th. KRMCA Winter Convention. Covington, KY. The annual KRMCA Winter convention will be held in Covington Kentucky this year at the Embassy Suites. For a full agenda and more information, check out page 9 of the newsletter.



6 February 6th. KRMCA OFFICE - CLASSROOM. ACI LEVEL I Certification class . This class is held monthly and covers the material review, written test, and practical test for the ACI Level I Concrete Technician Certification.



7 February 7th - 9th. KRMCA OFFICE - CLASSROOM. KRMCA LEVEL II CERTIFICATION CLASS. This class is held 3 times during the year . This certification is a requirement for any specified work for KYTC and can only be obtained at the KRMCA office.



6 March 6th. KRMCA OFFICE - CLASSROOM. KRMCA LEVEL III CERTIFICATION CLASS. This course is a new course developed to further the concrete industry with in depth education. More information can be found on page 8 and a registration form can be found on page 15 of the newsletter.

We protect what you love

And provide security when you need it most.

We're a full-service independent insurance agency with a hometown attitude dedicated to providing you with the best coverage possible and delivering superior service. Call us today about your **business insurance** needs.

LOGAN LAVELLE HUNT

www.LLHins.com
11420 Bluegrass Pkwy., Louisville KY
502-499-6880

Representing **M** The Motorists Insurance Group, You know us.

RINGING IN THE NEW YEAR WITH A LOOK BACK AT 2016

KY READY MIX INDUSTRY INCREASES PAVING MARKETSHARE

With the closing of a new year we thought it an appropriate time to review our Concrete Industry position with the Bevin Transportation Cabinet. With a complete hold on capital projects, called "Pause 50" and not including the Ohio River bridge projects or any other bridges; there was \$25M worth of concrete paving in 2016. This is actually an increase of 20% over 2015. Nationally concrete paving was down almost 10% in 2016 from 2015. We think it's a good sign that we were up while State capital project funding was on hold. And, the new State Highway Engineer was only placed in June. So actually, this success took place in about the last half of the year.

This should bode well for ready mix use next year. Sixty percent of paving in 2015 was Ready Mix about \$12M. In 2016 Ready Mix was about \$15M in paving. In addition in 2015, there was roughly \$21M of ready mix concrete

used by the State in misc. concrete, non-paving items such as sidewalks, headwalls, barrier walls, and curb and gutter. In 2016, a year of low funding, Ready Mix concrete miscellaneous non-paving items totaled \$11M.

In 2015 and 2016 concrete overlays were 15% of the total national paving market. We expect to collaborate with KCPA and work with KY FHWA and the Bevin KYTC early in 2017 to target opportunities for overlays, which will most likely be Ready Mix projects.

With Gov. Bevin significantly funding General Aviation, with the "Pause 50" hopefully coming to an end in the spring, with a stabilized Highway Trust fund; and, with a Kentuckian as US Secretary of Transportation; optimism for KYTC Ready Mix concrete use in 2017 is in order.

NRMCA'S NEW BUILD WITH STRENGTH INITIATIVE RELEASES YEAREND REVIEW

NRMCA just put out their yearend review of the BuildwithStrength initiative. You can follow the link here for the full report https://www.nrmca.org/PROMOTION/Documents/NRMCA_YearEndReport2016.pdf

You might be surprised at the size and scope of this program.

This is a major multi-million dollar program that KRMCA is on the front-lines of. The initiative is to combat the softwood lumber's dominance in low to mid rise structures. Kentucky is still a leader in ICF construction.

The National initiative is about all types of concrete buildings not just ICF. But it is a massive branding of Ready Mix concrete promoting Ready Mix concrete as the building material of choice. To our knowledge no other state has the variety of building types that Kentucky has. We have military, libraries, fire stations, schools, hotels, storm shelters, ambulance buildings, office buildings, hospitals, convenience stores and large and small houses.

It is a myth that a concrete building is necessarily more expensive. We are not only promoting concrete buildings but also we are working with fire safety officials, legislators and code officials to make inroads on codes and insurance requirements that favor Disaster Resilient buildings. Remember concrete buildings are largely "market we don't have". In flipping multi-family

apartments or moderate to low houses to concrete, we are increasing market share. This market potential is huge and it is in both rural and urban.

Please check out this report. It is quite eye opening on the scale of this effort, which should pay huge dividends to our industry. There will even be national surveys of builders, engineers and architects on their yearly on-going opinions of concrete buildings.

These surveys will measure the success of the program. Keep this program in mind and remember, there is free design assistance available.





Specializing in Risk Management for the Ready Mix Concrete Industry

Services Include:

- Loss Control
- Driver Training
- Unique Marketing Approach
- Risk Retention Programs
- Business Income Analysis
- In House Claims Service

BOWLING GREEN
1240 Fairway Street
P.O. Box 1779
Bowling Green, KY 42103

LEXINGTON
181 Prosperous Place
Lexington, KY 40509

NASHVILLE
830 Crescent Centre Drive
Suite 260
Franklin, TN 37067

OWENSBORO
P.O. Box 785
2009 Frederica Street
Owensboro, KY 42302

UPDATE:

U OF L LIGHTING STUDY FINDINGS TO BENEFIT CONCRETE INDUSTRY

In Jan. 2016, the Kentucky Ready Mixed Concrete Association finalized an agreement to partner with the Ready Mix Concrete Research and Education Foundation and the local RPGs to fund a new lighting research project to be undertaken at the University of Louisville.

The project, spearheaded by U of L graduate student, Jeremy Rice, with close guidance from Dr. Young Hoon Kim of the University of Louisville's Civil Engineering Department looked at past lighting research and the standards for reflectance values of concrete and asphalt pavements.

The research was substantially completed last month, as the graduate degree program thesis for Jeremy Rice. Jeremy looked at values for traditional lighting sources, as well as LED sources.

FROM THE STUDY

1 Findings indicate that concrete pavements can be as much as three times more reflective as comparable asphalt pavements from nearly every angle of incidence.

This means that when using concrete pavements, roughly 1/3 of the original spec'd lighting can be used to achieve the same design ambient brightness. This means significant energy savings when looking at lighting design.

2 The research from the U of L study recommends that the current R-Value (reflectance) tables used in the design industry be updated to reflect these findings. This recommendation could have industry-wide effects as it would consistently show concrete as a more energy efficient pavement in lighting design.

3 Research indicates that the reflectivity is not only affected by the pavement surface (concrete vs asphalt) but also by the type of lighting used (LED vs traditional).

This is significant because it further demonstrates the need of the R-Value Tables to be updated in accordance with new technology.

And in the process, Jeremy designed his own light reflectance meter (goniometer) prototype within the agreed budget; which, unbeknownst to any of us initially, would have cost tens of thousands of dollars. This goniometer cost is probably one reason this research has not been done in decades.

After successfully defending his thesis to a board of U of L faculty, Jeremy provided the details of the study to the KRMCA. The results of the research are incredibly beneficial for the concrete industry and can go a long way in helping to promote the use of concrete as a paving material - specifically in parking lots (a primarily ready-mixed application when concrete is selected.)

Jeremy's findings indicate that concrete paving

can be as much as three times more reflective than comparable asphalt pavements. This is very important information as it indicates that current Reflectivity Table Values need to be updated (they've been the same since the 1970s! before LED lights even existed.) Hopefully this will lead to pavements, especially parking lots, designed brighter with less energy and less fixtures.

KRMCA's next steps are to oversee the final completion of the study and to have these findings reviewed by the International Illuminating Engineers Society. We are optimistic that this study, unique as far as we know, may be the first step into pavement reflectance standards updates by IES. These standards reach far and wide to highways, streets and parking lots.

SPECIAL THANKS TO THE **KRMCA GOLD CLUB**

GOLD CLUB

Looking back on the year of KRMCA Member Events, it's easy to see the impact that the Gold Club members made. The KRMCA Winter Convention, Annual Member Golf Outing, Summer Board Meeting, and the Fall Board Meeting were all made possible in part by the support of our Gold Club sponsors. Please join the KRMCA in thanking the 2016 Gold Club Members for their support.

All-Rite Ready Mix

Baker Concrete Construction

Buzzi Unicem

Cemex/Kosmos Cement

Charah Inc.

Ernst Concrete Kentucky

Essroc Cement Corp.

Fly Ash Direct

GCP Applied Technologies

Hilltop Companies

imi – Irving Materials, Inc.

LafargeHolcim

Lehigh Cement Company

Liter's Inc.

Logan Lavelle Hunt

Nugent Sand Company

RussTech Admixtures, Inc.

Stalite

Stephens Mfg. Co.

Viking Truck/Oshkosh/McNeilus

KRMCA LEVEL III

A NEW CERTIFICATION COURSE

The Kentucky Ready Mixed Concrete Association has recently developed a new educational program designed to cover a wide range of concrete related topics. It could be of interest not only to those involved in concrete production, but to others with whom the concrete production industry interfaces such as specifiers, designers, contractors, etc. This course is designed as KRMCA Level III.

Topics include those previously covered during the second week of KRMCA Level II, plus several other important ones. The second week of Level II has been discontinued beginning this current season. The agenda provides a reference of scheduled topics and presenters. This course agenda can be found online at www.krmca.org/lvl3a-genda.

The class is scheduled for 3 1/2 days of classroom presentation and discussion for the dates of March 6th - 9th. An open book written exam which is optional to an attendee will be administered on the afternoon of March 9th. Those who elect to take the exam and who achieve a passing score (minimum 75%) will be issued a Level III Certification document. To our knowledge, no specifying agency has plans to reference it as a requirement for project specifications, proposals, etc.

For those electing to attend the entire class, a workbook (containing copies of presentations and any related chosen documents) and a PCA publication entitled "Design and Control of Concrete Mixes" will be provided. The fee in this case is \$400/person. However, if the PCA publication is not desired, then the fee is reduced by \$100.00

If one wishes to attend only a portion of the entire class, the fees will be as follows:

- For any portion of, or up to a single day, the cost shall be \$100
- For any portion of a second day, or up to two full days, the cost shall be \$200
- For any portion of a third day, or up to 3 full days, the cost shall be \$300
- The Workbook Publication can be requested for an additional \$100 to the base fee above.

Qualifications of this class content for engineer's professional development credit hours will be judged by the self-auditing individual.

For architects attending needing professional development hours, we intend to have the class content approved by the state qualifying agency.

In any case, we will provide hours of attendance documentation for any person requesting it.

You may register for this class using the form available online at KRMCA.org, attached to page 15 of this newsletter, or by calling the office at 502-695-1535.

If you have any questions, call John McChord at 502-682-7088.

WINTER CONVENTION 2017. WHAT'S ON THE AGENDA?

CONVENTION

This year's KRMCA Winter Convention is set to be another great success. The 3 year rotation means that the 2017 Convention will celebrate and recognize the KRMCA Legends of the Industry Awards. As always, there will be important association meetings covering a broad range of topics, informational and educational sessions pertaining to the KY Ready Mix industry, a presentation and recognition to the winner of the Annual KRMCA Essay Contest, and a presentation of Retiring Directors. The venue this year is the Embassy Suites in Covington Kentucky.



Embassy Suites, Covington KY

THURSDAY - JANUARY 26, 2017

| | |
|---------------|--|
| 9:00AM | REGISTRATION - Foyer |
| 9:30AM | ENVIRONMENTAL CONTROL & SAFETY COMMITTEE MEETING |
| 10:30AM | ASSOCIATE MEMBER'S MEETING |
| 10:30AM | EXECUTIVE COMMITTEE MEETING |
| 11:30AM | OPENING LUNCH - <i>KRMCA Safety Awards</i> |
| 1:30 - 4PM | KRMCA BOARD OF DIRECTORS MEETING |
| 4:00PM | PAST PRESIDENT'S MEETING <i>Nominating Committee</i> |
| 5:30 - 7:30PM | COCKTAIL RECEPTION <i>Brought to you by the KRMCA Gold Club</i> |
| | DINNER ON YOUR OWN |

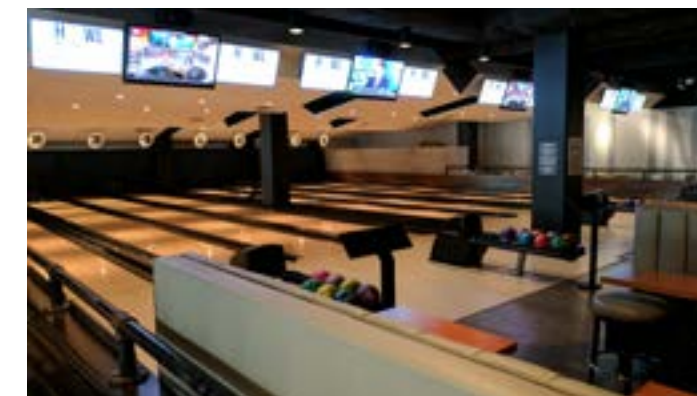
FRIDAY - JANUARY 27, 2017

| | |
|------------------|--|
| 9:00AM | REGISTRATION - Foyer |
| 8:30AM - 11:30AM | SPEAKERS Josh Huddy - <i>Director of Education & Marketing KRMCA</i> Marketing Concrete in the Digital Age Doug Ruhlin <i>Environmental & Sustainability Consultant</i> Resource Management Associates Who's At My Plant? Jack Moreland <i>Director of South Bank Partners</i> South Bank Partners Newport Concrete Infrastructure Creates Economic Development |
| 12:00PM | Lunch |
| 2:00PM | Bowling Tournament - Splitsville Luxury Lanes <i>Bus departs at 1:45PM</i> |
| 6:00PM | Cocktail Reception |
| 7:00PM | Banquet <ul style="list-style-type: none"> • 2016/2017 KRMCA Wm. T. Robertson High School Essay Contest Winner • KRMCA Bowling Awards • Presentation to Retiring Directors • President's Message • Introduction of New President • Kentucky Legends Award - John McChord |

SATURDAY - JANUARY 28, 2017

| | |
|---------|--|
| 9:00AM | GENERAL MEMBERSHIP MEETING <i>Election of Officers</i> <i>New Board Members</i> |
| 10:00AM | NEW BOARD (2nd) MEETING <i>Appointment of New Committee Chairmen</i> <i>Promotion Committee for 2017</i> |

PLEASE NOTE: A picture will be taken of the 2017 Board of Directors immediately following the 10:00AM Meeting



Splitsville Luxury Lanes



ROLLER COMPACTED CONCRETE CONTINUES TO MEET INDUSTRY NEEDS

RCC

We don't talk a lot about Roller Compacted Concrete since conventional concrete pavements have been doing so well. However, this workhorse, very low slump, high strength, product is placed in Kentucky and elsewhere. And it is being produced and dispatched out of Ready Mix plants. Recently IMI

completed a project in Lawrenceburg, KY for Florida Tile. Florida Tile makes ceramic and porcelain tile shipped globally. Their main manufacturing plant is located in Lawrenceburg KY.

Florida Tile wanted a durable, long lasting parking surface that could be

placed quickly. They needed a pavement for a new heavy truck parking area 130,000 square feet in size. IMI and E&B Paving paved the near 3 acre lot in 3 days.

Concrete products often are not given due credit for speed of placement. This project demonstrates the

speed of a one lift application of concrete. Keep in mind that the NRMCA Design Assistance Program offers assistance on RCC pavement projects.



KRMCA CLASSROOM GETS A MAKEOVER

FACILITIES UPDATES



The KRMCA Classroom received a major facelift over the Holiday break. With two new 65" LED 4K TV's mounted at the front of the class-

room, a fresh coat of paint and a bit of creative rearranging, the classroom that has been an integral part to the KRMCA operations has received new life.

The new TV's offer an easier view for classroom participants, and an easier integration for presenters technology needs. The setup allows the KRMCA to support HDMI inputs, Mac mini display ports (or thunderbolt ports), BluRay and standard DVD's, as well as traditional VGA inputs.

The centralized whiteboard and pulldown overhead screen still allow the use of a projector if the need arises as well. With the new technology in the KRMCA Classroom, the association further demonstrates its commitment to educating the industry with high quality presentations and concrete information.

The next time you're at the KRMCA office, be sure to head downstairs to see the new look of the classroom for yourself.





Kentucky Chapter of ACI announces:

ACI Concrete Strength Training Class

Where: Bluegrass Testing (In Rogers Jefferson County Stone)
13400 Old Henry Road
Louisville, Kentucky 40223

When: Friday, January 27, 2017
Class begins at 7:30 a.m. Until finished
Written exam and hands-on exam

Cost: \$600 per person to be paid with registration or prior to start of class
All cancellations will be charged for price of manual.

Class Objectives: C-39 Compressive strength of a cylinder
C-78 Flexural strength of a beam
C-1231 un-bonded capping
C-617 bonded capping to become a Certified Strength Technician.

Items to Bring: Calculator and Safety Glasses; Lunch is on your own

Items Included: Workbook

Registration Information

Company Name: _____
Company Address: _____

Student Name(s): _____
Phone: _____ Email: _____
Phone: _____ Email: _____

Check Included: # to attend _____ x \$600 = \$ _____

Return Form to: Cindy Messick, Chapter Secretary
Email: cmessick60@gmail.com
Phone: 502-667-0935
1009 Entrada Dr, Frankfort KY 40601

*New class rates effective
July 1, 2016*



KENTUCKY READY MIXED CONCRETE ASSOCIATION
1 HMB Circle • Frankfort, KY 40601

DATE of CLASS for ACI Level I -

circle date:

**JANUARY AND FEBRUARY
CLASSES CURRENTLY FULL
March 15, 2017**

NAME

NAME

NAME

COMPANY

ADDRESS

CITY **STATE** **ZIP**

PHONE **EMAIL**

Fees: ACI Level I. Limited to the first 45. Full one-day class to be held at KRMCA in Frankfort, KY.
 # to attend _____ x \$335.00 = _____ Discount Rate
 # to attend _____ x \$670.00 = _____ Regular Rate
 RETESTING _____ x \$150.00 = _____ (took the test and failed, retesting)
Please see below for additional fees that can be accrued.

Please return this form and check to:
Kentucky Ready Mixed Concrete Association
1 H.M.B. Circle, Frankfort, KY 40601
(502) 695-1535
FAX: (502) 695-9499
Email: SHagg@krmca.org

*Discounted rates will be available for all KRMCA members. Companies who have been a member and are rejoining the KRMCA will have to pay the dues for the prior two years to be eligible for the school discounted rate. Companies who are joining KRMCA for the first time will be eligible for the discounted rate immediately.

Classes are payable in advance or on day of class. **Payment must be received prior to taking the class for non-KRMCA members.

*****Additional Fees:**
Cancellation: \$100.00 if it is within one week of the class; all cancellations will be charged for the price of the ACI manual
Changing Classes: Please make sure you can attend the class on the given day. Each attendee can move from one class to another once without a charge. If you move classes a second time, there will be a \$100 charge for the change and an additional \$100 for each change after that.

KRMCA members have the first opportunity for registration. Please register early. We will send out information, to all those registered, regarding directions at a later date.



KENTUCKY READY MIXED CONCRETE ASSOCIATION

1 HMB Circle • Frankfort, KY 40601

KRMCA Level 3 - Class Date

March 6 - 9, 2017

NAME _____
NAME _____
NAME _____
NAME _____
COMPANY _____
ADDRESS _____
CITY _____ **STATE** _____ **ZIP** _____
PHONE _____ **EMAIL** _____

Fees: KRMCA Level 3. Limited to the first 45.

to attend _____ X \$400.00 = _____

to attend _____ X \$300.00 = _____ (if you already have *PCA Design & Control of Concrete Mixtures* Book)

to attend _____ X \$200.00 = _____ (if you have attended a Level II class this season and have the above book)

Please return this form and check to:

Kentucky Ready Mixed Concrete Association

1 H.M.B. Circle, Frankfort, KY 40601

(502) 695-1535

FAX: (502) 695-9499

Email: SHagg@krmca.org

Classes are payable in advance or on day of class. **Payment must be received prior to taking the class for non-KRMCA members.

*****Additional Fees:**

Cancellation: \$100.00 if it is within one week of the class.

KRMCA members have the first opportunity for registration. Please register early. We will send out information, to all those registered, regarding directions at a later date.